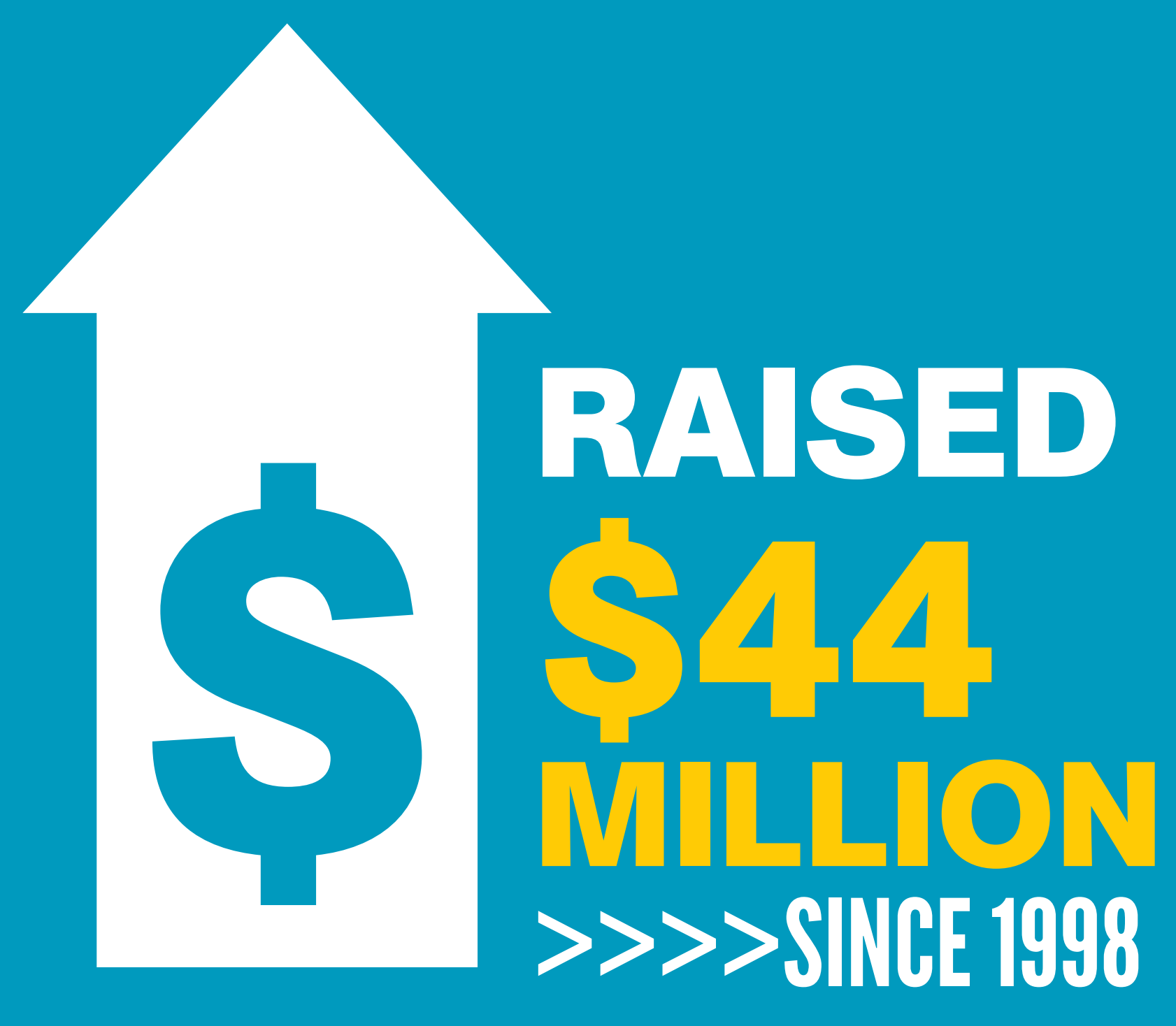


LOG A LOAD **WAS STARTED IN**  
**1998 BY THE SOUTH CAROLINA** 🌲  
**FORESTRY ASSOCIATION. THEY**  
**CURRENTLY RAISE OVER**  
**\$2M ANNUALLY!** 💵💵💵💵💵

DID YOU KNOW?





# LOG A LOAD FOR KIDS

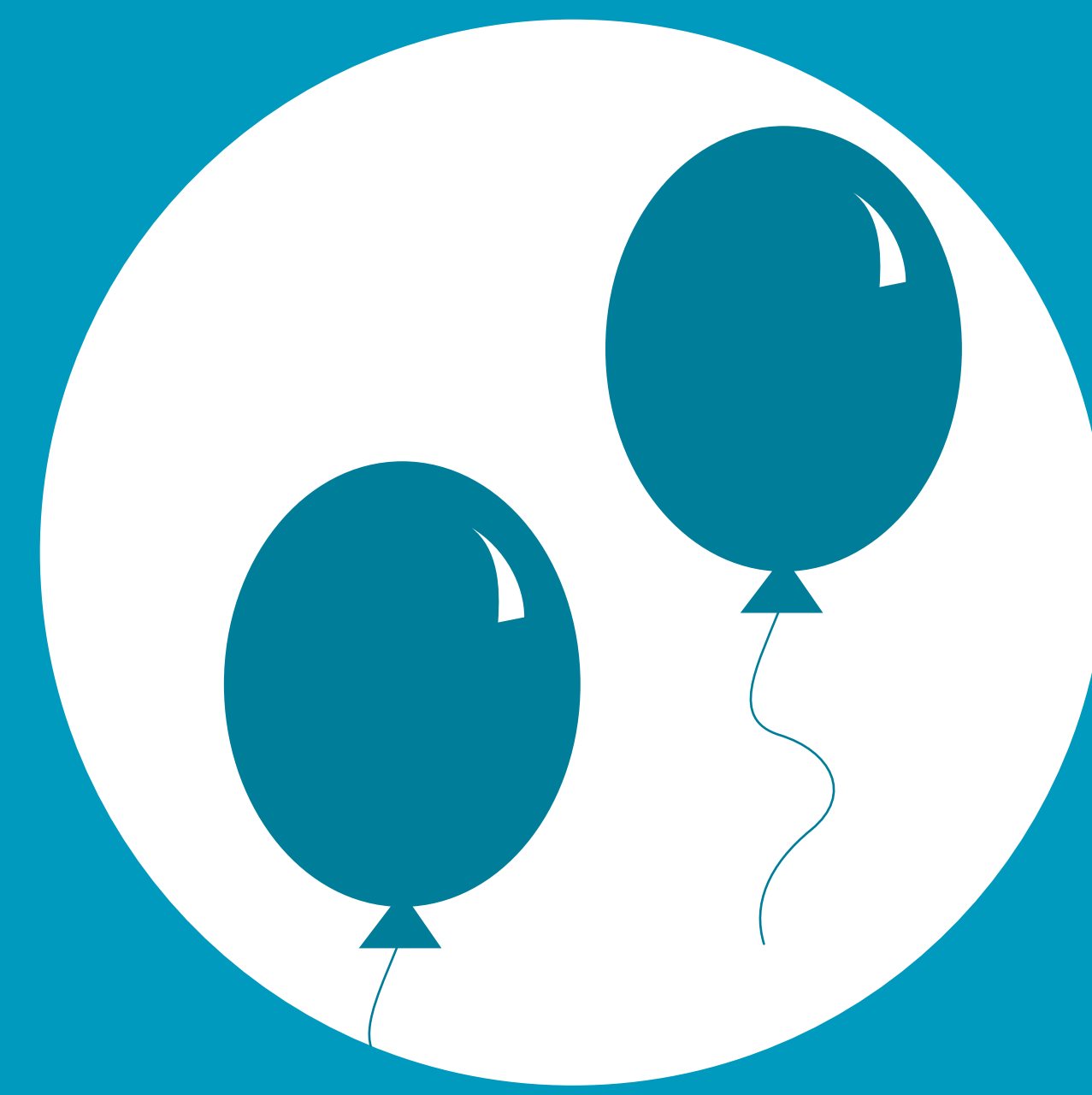
## RAISES FUNDS BY DOING GRASSROOTS FUNDRAISING EVENTS SUCH AS



FISHING EVENTS



AUCTIONS



CARNIVALS



GOLF  
TOURNAMENTS

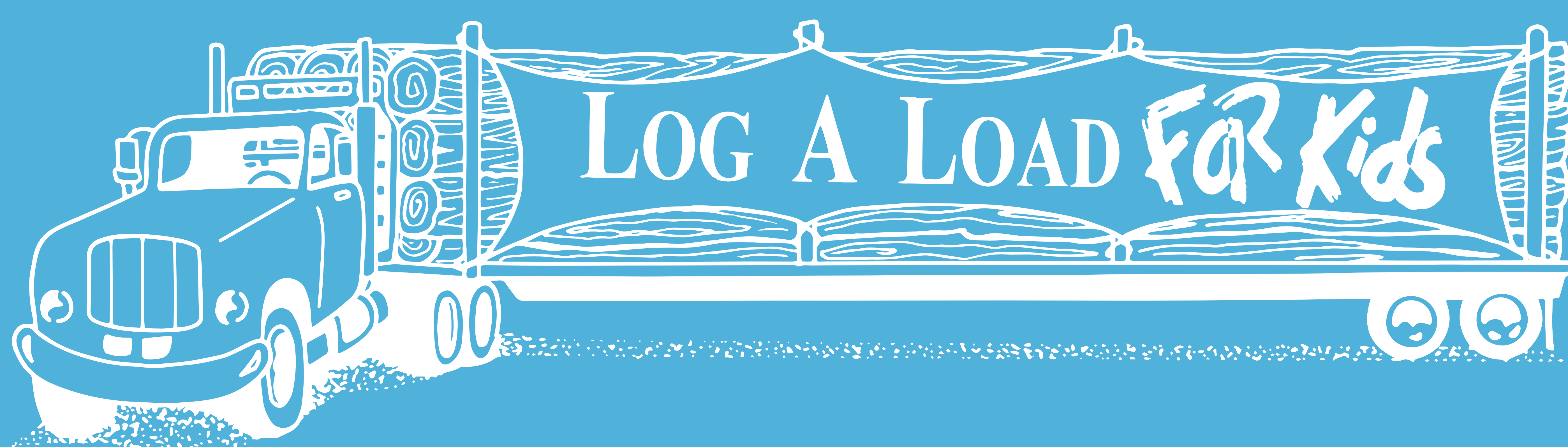


DINNERS



DONATIONS FOR  
LOADS OF LOGS!





**DONATIONS ARE RAISED  
IN 39 STATES THROUGH THE  
LOGGING, FORESTRY   
AND AFFILIATED ASSOCIATIONS  
THROUGHOUT  THE UNITED STATES**

**THANK YOU  
FOR YOUR SUPPORT!**



**Children's  
Miracle Network  
Hospitals®**